

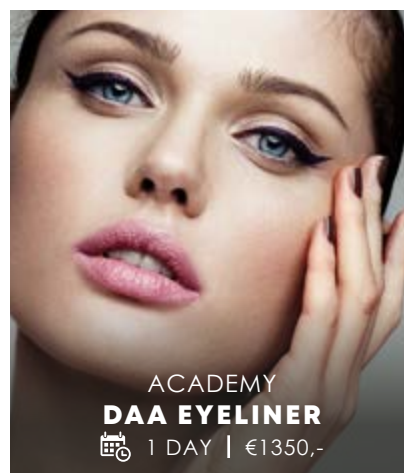
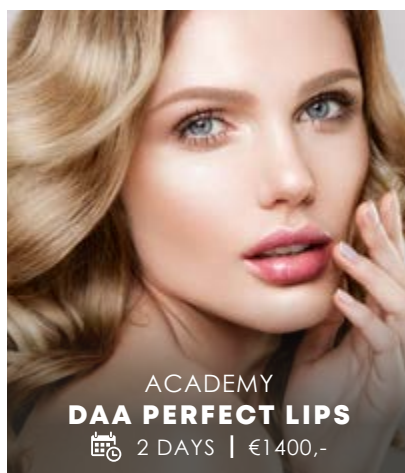
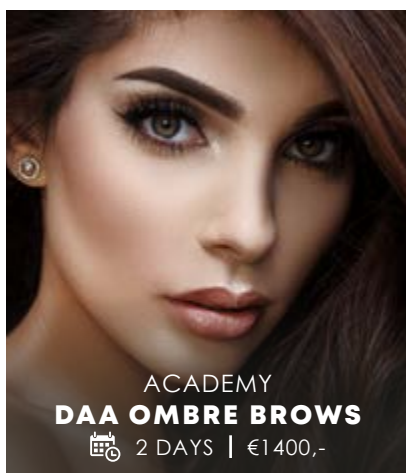


MASTERCCLASS NETHERLANDS

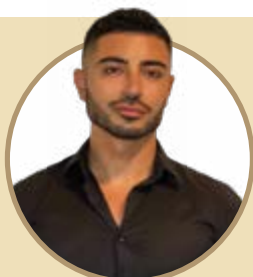
MAX. 4 PERSONEN

DAA
DUTCH ART AVENUE

PICK YOUR SKILL



6 REASONS TO JOIN US



RUSEN DONMEZ

Everyone notices the effect a beautiful woman or man has entering a room. When I was working as a MUA I always had a thing for eyebrows. Everywhere I went I started looking at people's eyebrows and in my head I was creating a whole different look for them. A look which made their features pop out and give them exactly what they deserved... GLAM!

01

EXTENSIVE PROGRAMS

We teach you everything to become the best.

02

EXPERIENCED TRAINERS

Our trainers are true professionals who worked all around the world.

03

ARTISTRY AT EVERY LEVEL!

Programs to maximize your creativity and elevate your artistry.

04

WILDCHILD; THE BEST

Our WildChild Kit contains all the products we work and get our results with.

05

OUR DIVERSE COMMUNITY

An extensive network of academy alumni & pro's around the world.

06

TAX-FREE

We are registered at the CRKBO (a Dutch government institution) which means that our students don't have to pay taxes on our courses.



WWW.DUTCHARTAVENUE.COM

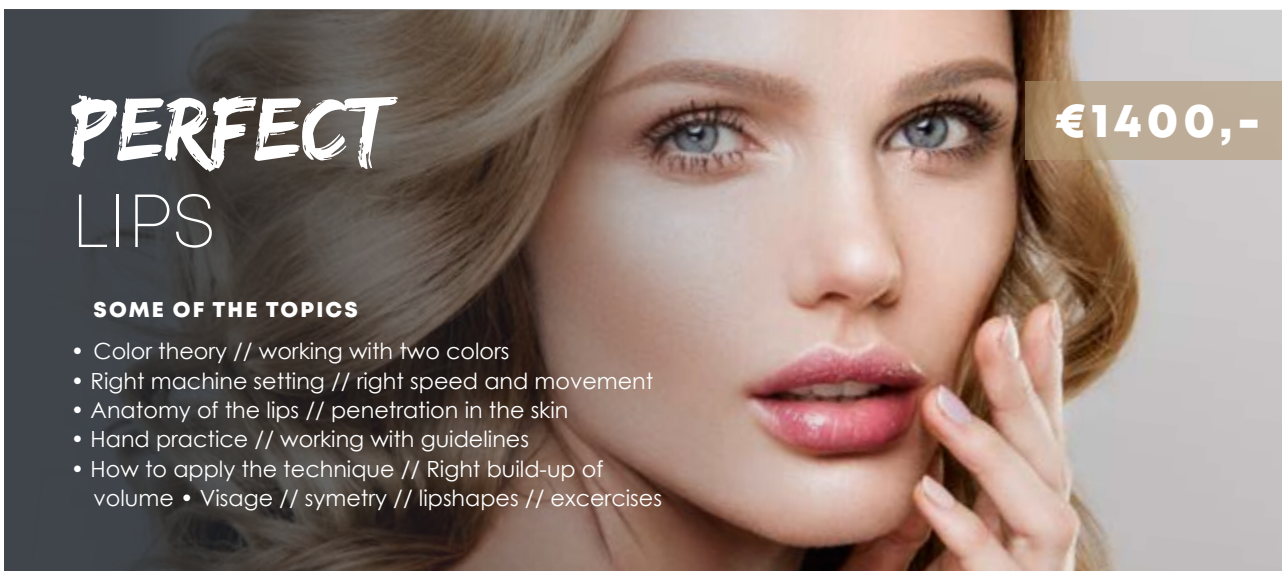


OMBRE BROWS

€1400,-

SOME OF THE TOPICS

- Color theory // different depths
- Right machine setting // right speed and movement
- Anatomy of the skin // penetration in the skin
- Hand practice // working with guidelines
- How to apply the technique // Right build-up of volume
- Visage // Faceshapes // browshapes // excercises

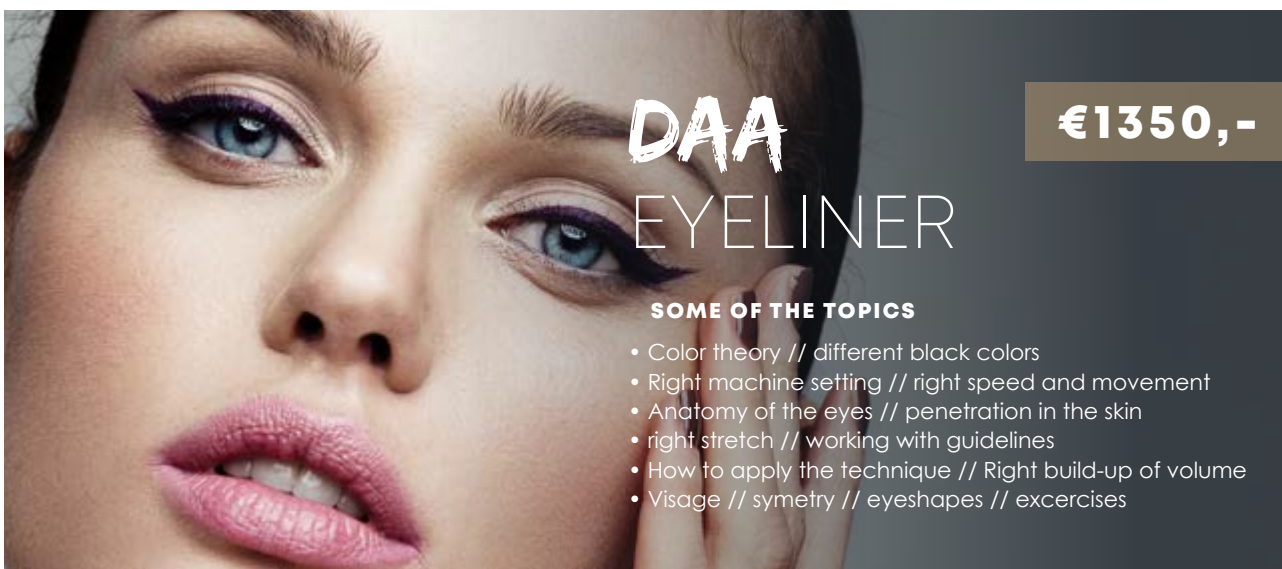


PERFECT LIPS

€1400,-

SOME OF THE TOPICS

- Color theory // working with two colors
- Right machine setting // right speed and movement
- Anatomy of the lips // penetration in the skin
- Hand practice // working with guidelines
- How to apply the technique // Right build-up of volume • Visage // symetry // lipshapes // excercises



DAA EYELINER

€1350,-

SOME OF THE TOPICS

- Color theory // different black colors
- Right machine setting // right speed and movement
- Anatomy of the eyes // penetration in the skin
- right stretch // working with guidelines
- How to apply the technique // Right build-up of volume
- Visage // symetry // eyeshapes // excercises



FOR YOUR INFORMATION

HANDS ON TRAINING

Trainer will give a presentation of 45 minutes and explain the technique on latex and paper. He will discuss all the fundamental parts that are important to learn and to apply the technique the best possible way.

EQUIPMENT

The participant is free to use his or her own machine or free to purchase the Wild child machine. If you would like to purchase the Wildchild, please let us know in advance.

DURING THE TRAINING

Rusenko will demonstrate the chosen technique live on a model. You are able to ask questions and make notes. Afterwards, it's your turn to work on a model.

END OF TRAINING

Trainer will answer questions and handout the certificates.

MODEL

If you are not able to find your own model, let us know so we can take care of it.

Timetable 2 days

11.00 - 12.00 Intro and introduction
12.00 - 13.00 Working on latex
13.00 - 15.00 Instructor live demo
15.30 - 18.00 Student live practice on model
18.00 - 18.30 Q&A and certification handover

End of training

After completing the training, the Dutch Art Avenue diploma will be handed out. Students will get study material with guidelines to practice the technique. There will be a lunch provided by the academy.

LOCATION

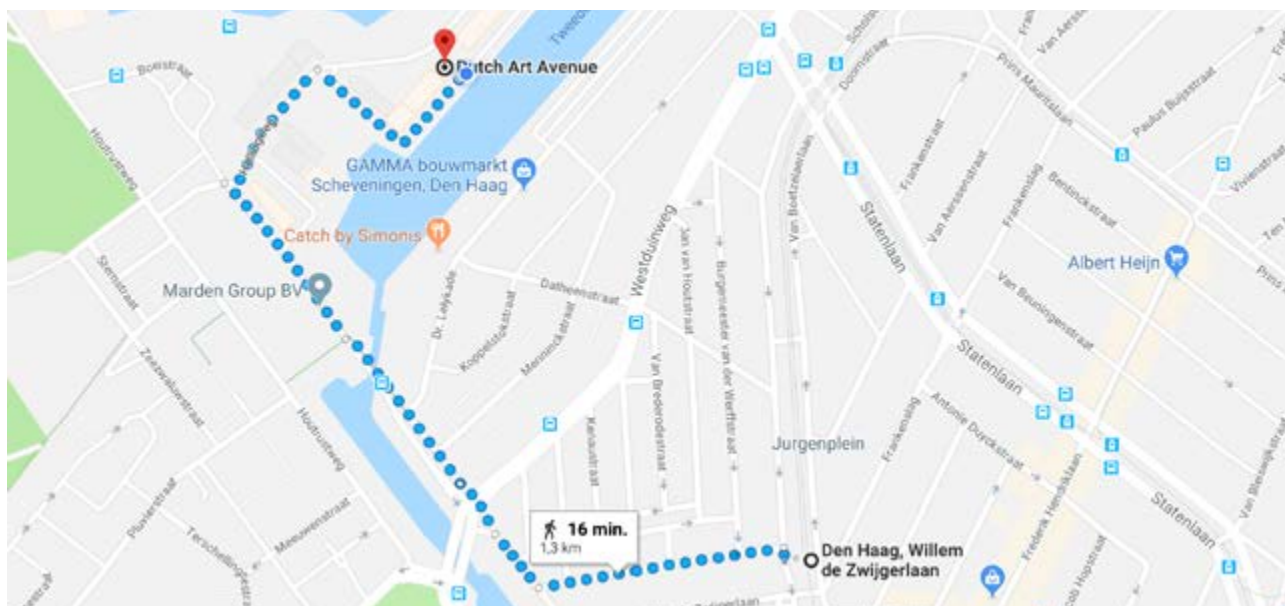
Hellingweg 96F, 2583 WH Den Haag, The Netherlands.

PARKING

Free parking in front of the door.

PUBLIC TRANSPORT

From the Willem de Zwijgerlaan tram stop (tram 11) it is a 16 min walk.



WILD
CHILD

P M U

RETAIL PRICE

€279,- INCL. VAT



KIT INCLUDES

- 1 x Permanent eyebrow makeup pen
- 1 x AC/DC Adaptor,
- 1 x connection line,
- 1 x Battery charging line
- 1 x Lithium Battery
- 15 x EN40 Permanent makeup Needle cartridge (1RL, 3RL, 5RL each size 5pcs For Gift).
- 1 x Exquisite Package

AVAILABLE COLORS



Rose Gold



Mat Black

MACHINE SPECIFICATIONS

- Color: Black/pink
- AC: 90-264V 50-60Hz
- DC: 5V 1A
- Speed: 8000-1600r/min
- Needle Protrusion: 0 - 2.5 mm
- The Pen works with Lithium Battery (Wireless) with 3 speed controls

FEATURES

Powerful Machine

Equipped with a powerful motor with an advanced gearing system allowing smooth and consistent power output.

See the size of the needle

A unique elegant machine created by worldclass designers.

Wireless

Ejoy working with the wireless designed pen.

Easy to Use

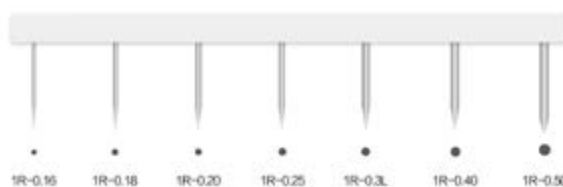
Ergonomic pen like designs that emulates the feel and grip of a pen allowing comfortable and precise technique.

NEEDLES

7 different types of our exclusive 1 point needles.



Type Specification



MASTERCLASS NETHERLANDS

MAX. 4 PERSONEN

1 Pick your training

2 Purchase your training
with or without the
Wildchild machine.



3 Sit back and relax,
we'll take it from there.

If you have any questions, please
contact us via our e-mail

ACADEMY@DUTCHARTAVENUE.COM



Or visit our website

WWW.DUTCHARTAVENUE.COM



SIGN UP
IN JUST 3 STEPS